

BMP8A Antibody (C-term)
Affinity Purified Rabbit Polyclonal Antibody (Pab)
Catalog # AP19760b**Specification**

BMP8A Antibody (C-term) - Product Information

Application	WB,E
Primary Accession	Q7Z5Y6
Other Accession	NP_861525.2
Reactivity	Human
Host	Rabbit
Clonality	Polyclonal
Isotype	Rabbit IgG
Calculated MW	44798
Antigen Region	271-298

BMP8A Antibody (C-term) - Additional Information**Gene ID** 353500**Other Names**

Bone morphogenetic protein 8A, BMP-8A, BMP8A

Target/Specificity

This BMP8A antibody is generated from rabbits immunized with a KLH conjugated synthetic peptide between 271-298 amino acids from the C-terminal region of human BMP8A.

Dilution

WB~~1:1000

E~~Use at an assay dependent concentration.

Format

Purified polyclonal antibody supplied in PBS with 0.09% (W/V) sodium azide. This antibody is purified through a protein A column, followed by peptide affinity purification.

Storage

Maintain refrigerated at 2-8°C for up to 2 weeks. For long term storage store at -20°C in small aliquots to prevent freeze-thaw cycles.

Precautions

BMP8A Antibody (C-term) is for research use only and not for use in diagnostic or therapeutic procedures.

BMP8A Antibody (C-term) - Protein Information**Name** BMP8A**Function** Induces cartilage and bone formation. May be the osteoinductive factor responsible for

the phenomenon of epithelial osteogenesis. Plays a role in calcium regulation and bone homeostasis (By similarity). Signaling protein involved in regulation of thermogenesis and energy balance. Proposed to increase the peripheral response of brown adipose tissue (BAT) to adrenergic stimulation while acting centrally in the hypothalamus to increase sympathetic output to BAT.

Cellular Location

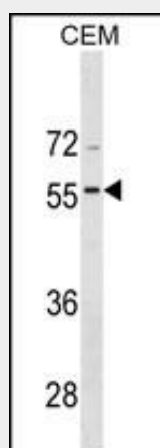
Secreted.

BMP8A Antibody (C-term) - Protocols

Provided below are standard protocols that you may find useful for product applications.

- [Western Blot](#)
- [Blocking Peptides](#)
- [Dot Blot](#)
- [Immunohistochemistry](#)
- [Immunofluorescence](#)
- [Immunoprecipitation](#)
- [Flow Cytometry](#)
- [Cell Culture](#)

BMP8A Antibody (C-term) - Images



BMP8A Antibody (C-term) (Cat. #AP19760b) western blot analysis in CEM cell line lysates (35ug/lane). This demonstrates the BMP8A antibody detected the BMP8A protein (arrow).

BMP8A Antibody (C-term) - Background

Induces cartilage and bone formation. May be the osteoinductive factor responsible for the phenomenon of epithelial osteogenesis. Plays a role in calcium regulation and bone homeostasis (By similarity).

BMP8A Antibody (C-term) - References

Davila, S., et al. Genes Immun. 11(3):232-238(2010)
Yokoyama, K., et al. Nephron Clin Pract 115 (4), C237-C243 (2010) :